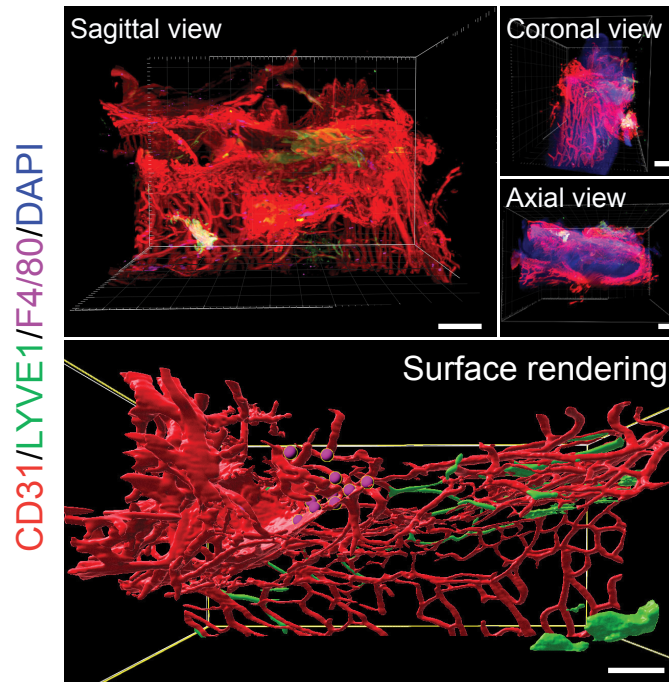


## Young alveolar bone



Cropping 3D images of young mice alveolar bones stained with CD31 (red), LYVE1 (green), F4/80 (violet), and DAPI (grey) in different directions. Surface and spot rendering of the vascular system and macrophages in young mice alveolar bones. Scale bars: cropping, 300  $\mu\text{m}$ ; rendering, 150  $\mu\text{m}$ .