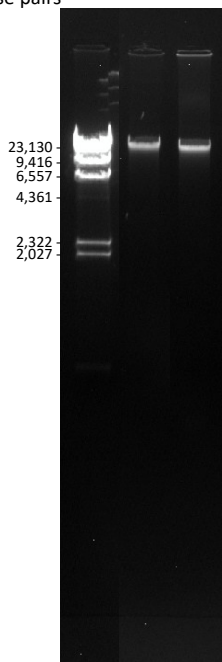
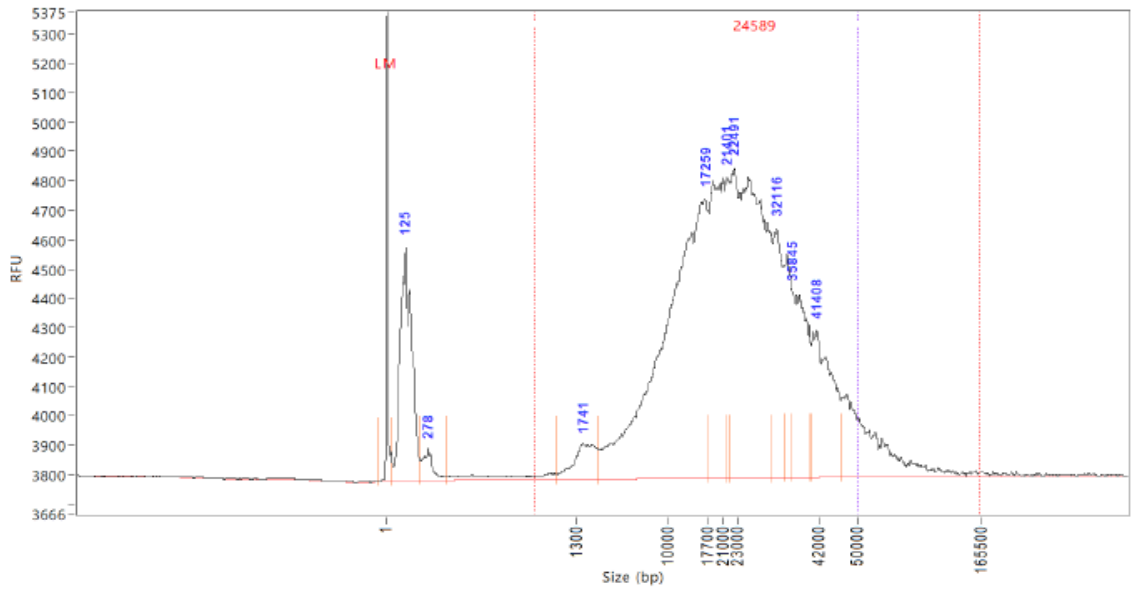


Base pairs



NEB #N3012
CTAB extraction 1
CTAB extraction 2

CTAB extraction 1



Gel and capillary electrophoresis on exemplar samples from *Wahlenbergia stricta* that demonstrates the size distribution of the purified genomic DNA. DNA was isolated from ~40 mg leaf tissue yielding approximately 10 ug DNA (260/280= 1.8, 260/230 = 1.4). Peak at ~125 bp is likely residual RNA. Together, this suggests that additional purification is needed to remove buffer carryover and/or salts, and further RNase digestion would be beneficial.