

PromethION 2 Solo P2S-00569-B Final report

27 août 24, 11:26 UTC+1:00 — 31 août 24, 11:28 UTC+1:00 ·
TGS0102_T1WT_T2Stress_27082024 · T1WT_T2Stress · P2S-00569-B
Protocol run ID: 3d74dea5-9ab6-42b3-959a-b5b58c64990d



[Run summary](#) | [Run configuration](#) | [Sequence output](#) | [Run health](#) | [Run log](#)

^ Run summary

DATA OUTPUT

Estimated bases

84.68 Gb

Reads generated

10.3 M

Estimated N50

15.86 kb

RUN DURATION

Run time

96 hrs 0 mins / 96 hrs 0 mins

Elapsed time Run limit

Run status

FINISHED · Target runtime has been reached

[View unit abbreviations used in this report](#)

^ Run configuration

^ RUN SETUP

Flow cell type FLO-PRO114M
Flow cell type alias FLO-PRO114M
Flow cell ID PAW58826
Kit type SQK-NBD114-24

^ RUN SETTINGS

Run limit 96 hrs
Pore scan freq. 1.5 hrs
Reserved pores On
Basecalling Off
Modified basecalling Off

^ DATA OUTPUT SETTINGS

FAST5 output Off
FASTQ data output Off
POD5 data output One file per hour
BAM file output Off
Bulk file output Off
Data location C:\data\
\TGS0102_T1WT_T2Stress
_27082024/
T1WT_T2Stress/20240827_
1126_P2S-00569-
B_PAW58826_3d74dea5

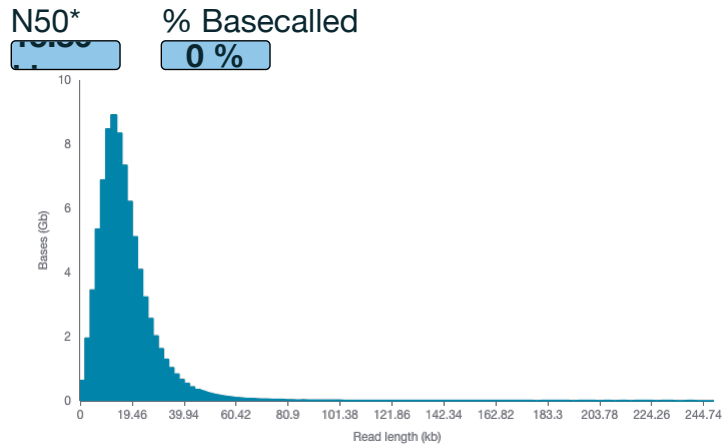
^ SOFTWARE VERSIONS

MinKNOW 24.06.5
Bream 8.0.9
Configuration 6.0.13
Dorado 7.4.12
MinKNOW Core 6.0.8

^ Sequence output

^ READ LENGTHS · OUTLIERS REMOVED

The read length graph shows the total number of bases vs the read length. The longest 1% of strands are classified as outliers, and excluded to allow focus on the main body of data.



^ OUTLIERS

The longest 1% of strands are classified as outliers, and aggregated into groups to show their relative amounts.

Read length (Mb)	Bases (Mb)
0.246 - 0.77	601.72
0.77 - 1.294	171.84
1.294 - 1.819	69.53
1.819 - 1.851	3.69

^ CUMULATIVE OUTPUT

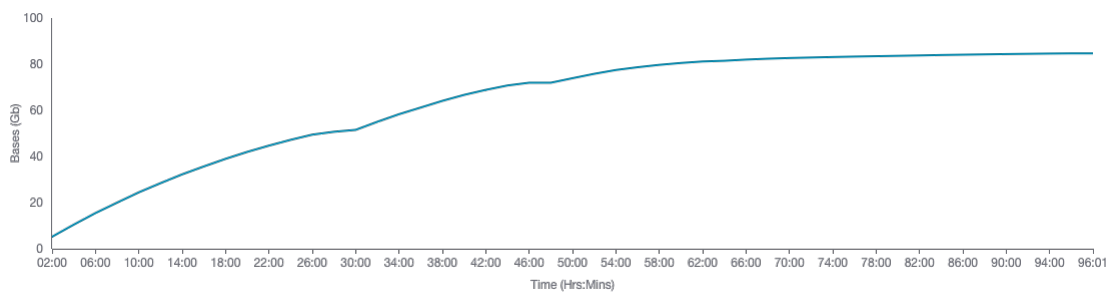
The cumulative output shows the total amount of bases or reads sequenced over time by your device.

Bases

Legend

— Estimate
d

Predicted total number of bases, prior to basecalling

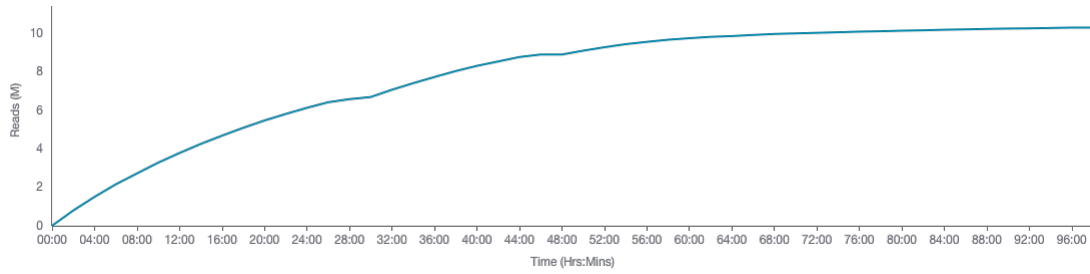


Reads

Legend

— Total

Total number of reads, including passed, failed and skipped.



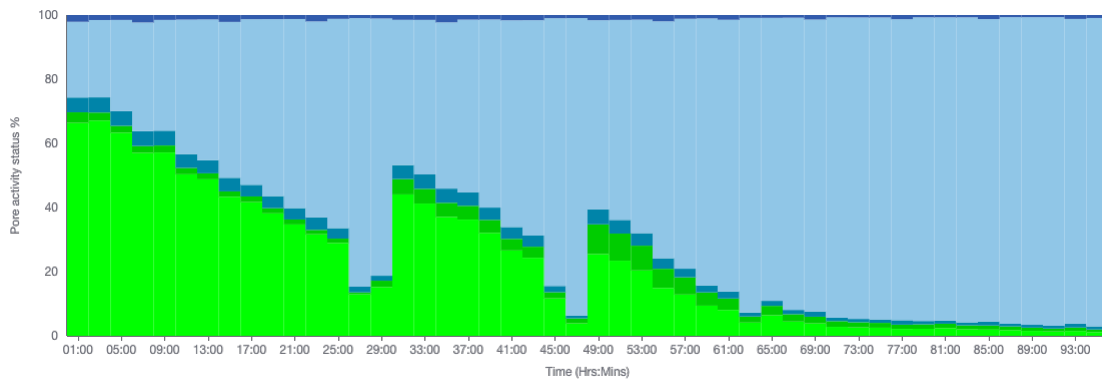
Run health

PORE ACTIVITY

The Pore activity graph shows the performance of your sample as it is being sequenced during a run.

Show grouped

Legend



Troubleshooting

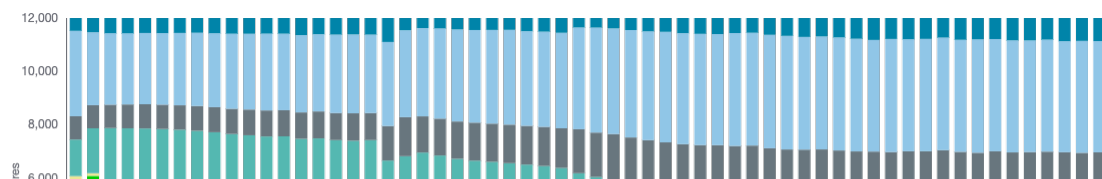
General

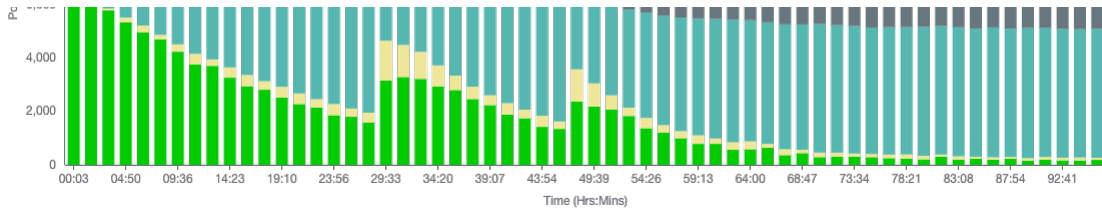
Some commonly seen issues are excess pores classified as Recovering, Open Pore, or Free Adapter. To find out what advice is applicable for your run, visit the [user guide](#).

PORE SCAN

A Pore scan is performed at configurable time intervals to determine the current status of pores within channels on a Flow Cell. For this run a Pore scan is performed every 1.5 hrs.

Legend





Troubleshooting

High proportion Unavailable
Possible contaminants in library blocking the pore. Consider using the Flow Cell Wash Kit, and reloading a library.

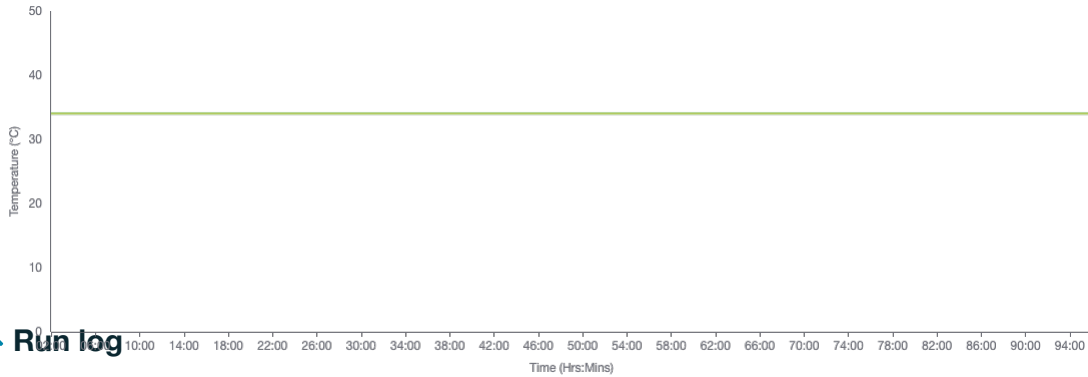
High proportion Inactive
If localised to one area of the Flow Cell, this could indicate that an air bubble has been introduced during the flushing/loading steps. If inactivity is spread across the Flow Cell this could be caused by improper loading of the library, please refer to the [user guide](#) for further support.

TEMPERATURE

The temperature of the Flow Cell over the run time.

Legend

— Measure — Target



Run log

SYSTEM MESSAGES

System messages are a record of the events that occurred in the time covered by this report.

- Out of range**
Check that the Flow Cell is correctly seated and firmly pushed down into the device. Ensure ambient temperature is always within the specified range for your device in the [user guide](#).
- Airflow errors**
Airflow is good but not excessive. Excessive amounts of cool air blowing on the device could prevent it from reaching target temperature.

Warnings

Events

- Disk space** · Aug 27 2024, 11:26
Disk C:\ has 1410 GB space remaining
- Waiting for temperature** · Aug 27 2024, 11:26
Waiting up to 300 seconds for temperature to stabilise at 34.0°C
- Starting** · Aug 27 2024, 11:28
Starting sequencing procedure
- Pore scan starting** · Aug 27 2024, 11:28
Performing Pore Scan
- Pore scan result** · Aug 27 2024, 11:31
Pore scan for flow cell PAW58826 has found a total of 6088 pores. 2460 pores available for immediate sequencing
- Pore scan starting** · Aug 27 2024, 13:03
Performing Pore Scan
- Pore scan result** · Aug 27 2024, 13:07
Pore scan for flow cell PAW58826 has found a total of 6196 pores. 2428 pores available for immediate sequencing
- Pore scan starting** · Aug 27 2024, 14:38
Performing Pore Scan
- Pore scan result** · Aug 27 2024, 14:42
Pore scan for flow cell PAW58826 has found a total of 5851 pores. 2382 pores available for immediate sequencing
- Pore scan starting** · Aug 27 2024, 16:14
Performing Pore Scan
- Pore scan result** · Aug 27 2024, 16:18

Pore scan result · Aug 27 2024, 10:10

Pore scan for flow cell PAW58826 has found a total of 5509 pores. 2232 pores available for immediate sequencing

Pore scan starting · Aug 27 2024, 17:49

Performing Pore Scan

Pore scan result · Aug 27 2024, 17:53

Pore scan for flow cell PAW58826 has found a total of 5210 pores. 2140 pores available for immediate sequencing

Pore scan starting · Aug 27 2024, 19:25

Performing Pore Scan

Pore scan result · Aug 27 2024, 19:29

Pore scan for flow cell PAW58826 has found a total of 4864 pores. 2135 pores available for immediate sequencing

Pore scan starting · Aug 27 2024, 21:00

Performing Pore Scan

Pore scan result · Aug 27 2024, 21:05

Pore scan for flow cell PAW58826 has found a total of 4510 pores. 1954 pores available for immediate sequencing

Pore scan starting · Aug 27 2024, 22:36

Performing Pore Scan

Pore scan result · Aug 27 2024, 22:40

Pore scan for flow cell PAW58826 has found a total of 4151 pores. 1811 pores available for immediate sequencing

Pore scan starting · Aug 28 2024, 00:11

Performing Pore Scan

Pore scan result · Aug 28 2024, 00:16

Pore scan for flow cell PAW58826 has found a total of 3942 pores. 1855 pores available for immediate sequencing

Pore scan starting · Aug 28 2024, 01:47

Performing Pore Scan

Pore scan result · Aug 28 2024, 01:51

Pore scan for flow cell PAW58826 has found a total of 3646 pores. 1679 pores available for immediate sequencing

Pore scan starting · Aug 28 2024, 03:23

Performing Pore Scan

Pore scan result · Aug 28 2024, 03:27

Pore scan for flow cell PAW58826 has found a total of 3361 pores. 1585 pores available for immediate sequencing

Pore scan starting · Aug 28 2024, 04:58

Performing Pore Scan

Pore scan result · Aug 28 2024, 05:02

Pore scan for flow cell PAW58826 has found a total of 3130 pores. 1545 pores available for immediate sequencing

Pore scan starting · Aug 28 2024, 06:34

Performing Pore Scan

Pore scan result · Aug 28 2024, 06:38

Pore scan for flow cell PAW58826 has found a total of 2920 pores. 1404 pores available for immediate sequencing

Pore scan starting · Aug 28 2024, 08:09

Performing Pore Scan

Pore scan result · Aug 28 2024, 08:13

Pore scan for flow cell PAW58826 has found a total of 2672 pores. 1353 pores available for immediate sequencing

Pore scan starting · Aug 28 2024, 09:45

Performing Pore Scan

Pore scan result · Aug 28 2024, 09:49

Pore scan for flow cell PAW58826 has found a total of 2457 pores. 1333 pores available for immediate sequencing

Pore scan starting · Aug 28 2024, 11:20

Performing Pore Scan

Pore scan result · Aug 28 2024, 11:25

Pore scan for flow cell PAW58826 has found a total of 2274 pores. 1148 pores available for immediate sequencing

Pore scan starting · Aug 28 2024, 12:56

Performing Pore Scan

Pore scan result · Aug 28 2024, 13:00

Pore scan for flow cell PAW58826 has found a total of 2107 pores. 1154 pores available for immediate sequencing

Pore scan starting · Aug 28 2024, 14:31

Performing Pore Scan

Pore scan result · Aug 28 2024, 14:36

Pore scan for flow cell PAW58826 has found a total of 1953 pores. 1035 pores available for immediate sequencing

Pore scan starting · Aug 28 2024, 16:57

Performing Pore Scan

Pore scan result · Aug 28 2024, 17:02

Pore scan for flow cell PAW58826 has found a total of 4642 pores. 1867 pores available for immediate sequencing

Pore scan starting · Aug 28 2024, 18:33

Performing Pore Scan

Pore scan result · Aug 28 2024, 18:37

Pore scan for flow cell PAW58826 has found a total of 4486 pores. 1856 pores available for immediate sequencing

Pore scan starting · Aug 28 2024, 20:09

Performing Pore Scan

Pore scan result · Aug 28 2024, 20:13

Pore scan for flow cell PAW58826 has found a total of 4226 pores. 1745 pores available for immediate sequencing

Pore scan starting · Aug 28 2024, 21:44

Performing Pore Scan

Pore scan result · Aug 28 2024, 21:49

Pore scan for flow cell PAW58826 has found a total of 3721 pores. 1632 pores available for immediate sequencing

Pore scan starting · Aug 28 2024, 23:20

Performing Pore Scan

Pore scan result · Aug 28 2024, 23:24
Pore scan for flow cell PAW58826 has found a total of 3338 pores. 1615 pores available for immediate sequencing

Pore scan starting · Aug 29 2024, 00:56
Performing Pore Scan

Pore scan result · Aug 29 2024, 01:00
Pore scan for flow cell PAW58826 has found a total of 2923 pores. 1467 pores available for immediate sequencing

Pore scan starting · Aug 29 2024, 02:31
Performing Pore Scan

Pore scan result · Aug 29 2024, 02:36
Pore scan for flow cell PAW58826 has found a total of 2602 pores. 1376 pores available for immediate sequencing

Pore scan starting · Aug 29 2024, 04:07
Performing Pore Scan

Pore scan result · Aug 29 2024, 04:11
Pore scan for flow cell PAW58826 has found a total of 2306 pores. 1198 pores available for immediate sequencing

Pore scan starting · Aug 29 2024, 05:43
Performing Pore Scan

Pore scan result · Aug 29 2024, 05:47
Pore scan for flow cell PAW58826 has found a total of 2061 pores. 1168 pores available for immediate sequencing

Pore scan starting · Aug 29 2024, 07:18
Performing Pore Scan

Pore scan result · Aug 29 2024, 07:23
Pore scan for flow cell PAW58826 has found a total of 1833 pores. 940 pores available for immediate sequencing

Pore scan starting · Aug 29 2024, 08:54
Performing Pore Scan

Pore scan result · Aug 29 2024, 08:58
Pore scan for flow cell PAW58826 has found a total of 1621 pores. 966 pores available for immediate sequencing

Pore scan starting · Aug 29 2024, 11:27
Performing Pore Scan

Pore scan result · Aug 29 2024, 11:32
Pore scan for flow cell PAW58826 has found a total of 3576 pores. 1504 pores available for immediate sequencing

Pore scan starting · Aug 29 2024, 13:03
Performing Pore Scan

Pore scan result · Aug 29 2024, 13:07
Pore scan for flow cell PAW58826 has found a total of 3050 pores. 1394 pores available for immediate sequencing

Pore scan starting · Aug 29 2024, 14:39
Performing Pore Scan

Pore scan result · Aug 29 2024, 14:43
Pore scan for flow cell PAW58826 has found a total of 2601 pores. 1357 pores available for immediate sequencing

Pore scan starting · Aug 29 2024, 16:14
Performing Pore Scan

Pore scan result · Aug 29 2024, 16:19
Pore scan for flow cell PAW58826 has found a total of 2137 pores. 1243 pores available for immediate sequencing

Pore scan starting · Aug 29 2024, 17:50
Performing Pore Scan

Pore scan result · Aug 29 2024, 17:55
Pore scan for flow cell PAW58826 has found a total of 1755 pores. 951 pores available for immediate sequencing

Pore scan starting · Aug 29 2024, 19:26
Performing Pore Scan

Pore scan result · Aug 29 2024, 19:30
Pore scan for flow cell PAW58826 has found a total of 1486 pores. 889 pores available for immediate sequencing

Pore scan starting · Aug 29 2024, 21:02
Performing Pore Scan

Pore scan result · Aug 29 2024, 21:06
Pore scan for flow cell PAW58826 has found a total of 1261 pores. 755 pores available for immediate sequencing

Pore scan starting · Aug 29 2024, 22:37
Performing Pore Scan

Pore scan result · Aug 29 2024, 22:42
Pore scan for flow cell PAW58826 has found a total of 1106 pores. 604 pores available for immediate sequencing

Pore scan starting · Aug 30 2024, 00:13
Performing Pore Scan

Pore scan result · Aug 30 2024, 00:17
Pore scan for flow cell PAW58826 has found a total of 985 pores. 635 pores available for immediate sequencing

Pore scan starting · Aug 30 2024, 01:49
Performing Pore Scan

Pore scan result · Aug 30 2024, 01:53
Pore scan for flow cell PAW58826 has found a total of 847 pores. 462 pores available for immediate sequencing

Pore scan starting · Aug 30 2024, 03:24
Performing Pore Scan

Pore scan result · Aug 30 2024, 03:28
Pore scan for flow cell PAW58826 has found a total of 880 pores. 492 pores available for immediate sequencing

Pore scan starting · Aug 30 2024, 05:00
Performing Pore Scan

Pore scan result · Aug 30 2024, 05:04
Pore scan for flow cell PAW58826 has found a total of 783 pores. 548 pores available for immediate sequencing

Pore scan starting · Aug 30 2024, 06:35
Performing Pore Scan

Pore scan result · Aug 30 2024, 06:40
Pore scan for flow cell PAW58826 has found a total of 582 pores. 318 pores available for immediate sequencing

Pore scan starting · Aug 30 2024, 08:11
Performing Pore Scan

Pore scan result · Aug 30 2024, 08:16
Pore scan for flow cell PAW58826 has found a total of 564 pores. 386 pores available for immediate sequencing

Pore scan starting · Aug 30 2024, 09:47
Performing Pore Scan

Pore scan result · Aug 30 2024, 09:51
Pore scan for flow cell PAW58826 has found a total of 458 pores. 262 pores available for immediate sequencing

Pore scan starting · Aug 30 2024, 11:22
Performing Pore Scan

Pore scan result · Aug 30 2024, 11:27
Pore scan for flow cell PAW58826 has found a total of 456 pores. 279 pores available for immediate sequencing

Pore scan starting · Aug 30 2024, 12:58
Performing Pore Scan

Pore scan result · Aug 30 2024, 13:02
Pore scan for flow cell PAW58826 has found a total of 423 pores. 287 pores available for immediate sequencing

Pore scan starting · Aug 30 2024, 14:34
Performing Pore Scan

Pore scan result · Aug 30 2024, 14:38
Pore scan for flow cell PAW58826 has found a total of 406 pores. 269 pores available for immediate sequencing

Pore scan starting · Aug 30 2024, 16:09
Performing Pore Scan

Pore scan result · Aug 30 2024, 16:14
Pore scan for flow cell PAW58826 has found a total of 384 pores. 234 pores available for immediate sequencing

Pore scan starting · Aug 30 2024, 17:45
Performing Pore Scan

Pore scan result · Aug 30 2024, 17:49
Pore scan for flow cell PAW58826 has found a total of 389 pores. 225 pores available for immediate sequencing

Pore scan starting · Aug 30 2024, 19:20
Performing Pore Scan

Pore scan result · Aug 30 2024, 19:25
Pore scan for flow cell PAW58826 has found a total of 339 pores. 193 pores available for immediate sequencing

Pore scan starting · Aug 30 2024, 20:56
Performing Pore Scan

Pore scan result · Aug 30 2024, 21:00
Pore scan for flow cell PAW58826 has found a total of 386 pores. 287 pores available for immediate sequencing

Pore scan starting · Aug 30 2024, 22:32

Unit abbreviations

Pore scan result · Aug 30 2024, 22:36

Byte	B	por	Base	b	Minutes	mins
Kilobyte	KB		Kilobase	kb	Hours	hrs
Megabyte	MB		Megabase	Mb		
Gigabyte	GB	por	Gigabase	Gb		
			Terabase	Tb		

Pore scan result · Aug 31 2024, 01:47
Pore scan for flow cell PAW58826 has found a total of 285 pores. 182 pores available for immediate sequencing

Pore scan starting · Aug 31 2024, 03:18
Performing Pore Scan

Pore scan result · Aug 31 2024, 03:23
Pore scan for flow cell PAW58826 has found a total of 295 pores. 218 pores available for immediate sequencing

Pore scan starting · Aug 31 2024, 04:54
Performing Pore Scan

Pore scan result · Aug 31 2024, 04:58
Pore scan for flow cell PAW58826 has found a total of 251 pores. 151 pores available for immediate sequencing

Pore scan starting · Aug 31 2024, 06:29
Performing Pore Scan

Pore scan result · Aug 31 2024, 06:33
Pore scan for flow cell PAW58826 has found a total of 295 pores. 181 pores available for immediate sequencing

Pore scan starting · Aug 31 2024, 08:04
Performing Pore Scan

Pore scan result · Aug 31 2024, 08:09
Pore scan for flow cell PAW58826 has found a total of 267 pores. 162 pores available for immediate sequencing

Pore scan starting · Aug 31 2024, 09:40
Performing Pore Scan

Pore scan result · Aug 31 2024, 09:44
Pore scan for flow cell PAW58826 has found a total of 273 pores. 160 pores available for immediate sequencing

Pore scan starting · Aug 31 2024, 11:15
Performing Pore Scan

Pore scan result · Aug 31 2024, 11:19
Pore scan for flow cell PAW58826 has found a total of 263 pores. 177 pores available for immediate sequencing

